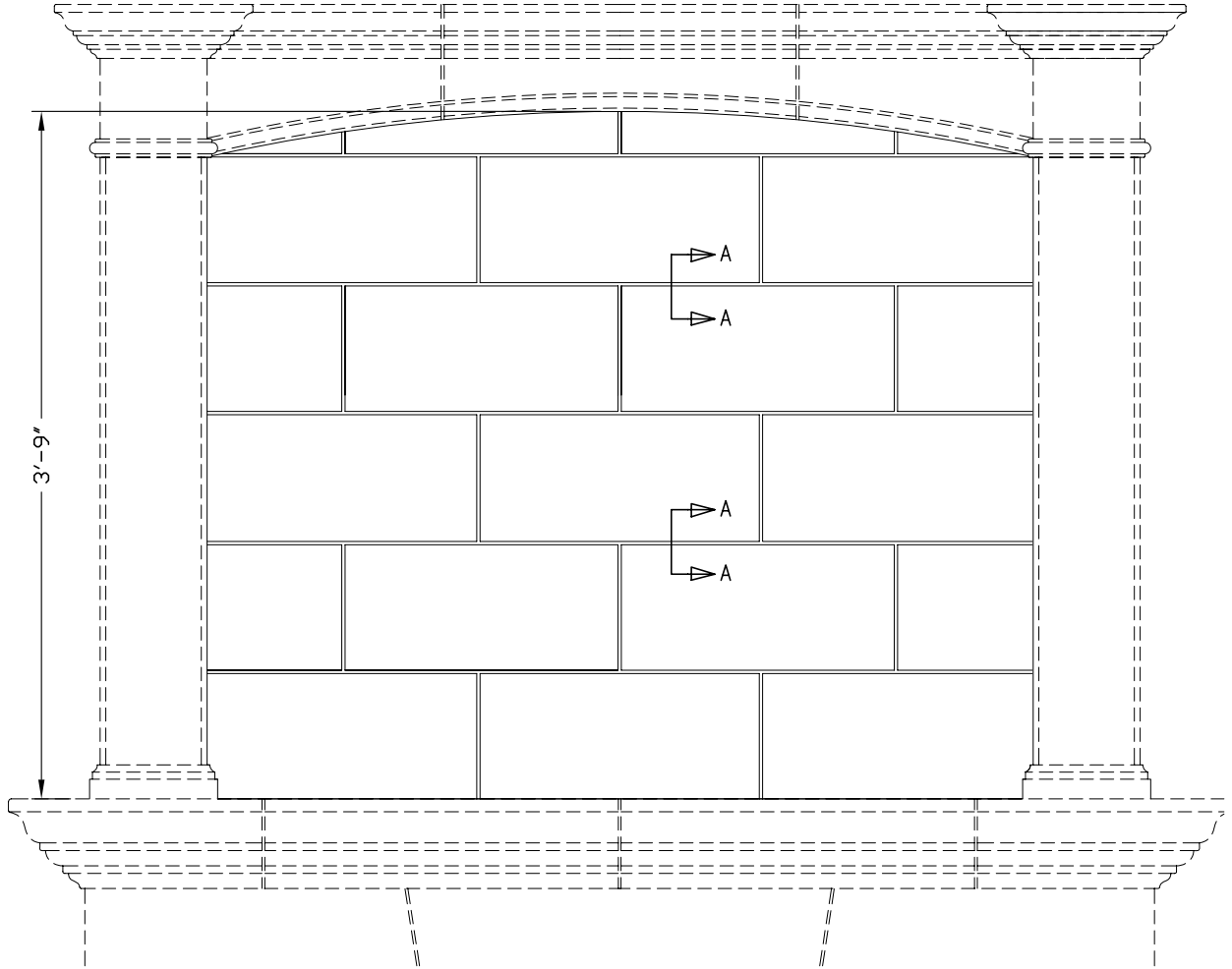
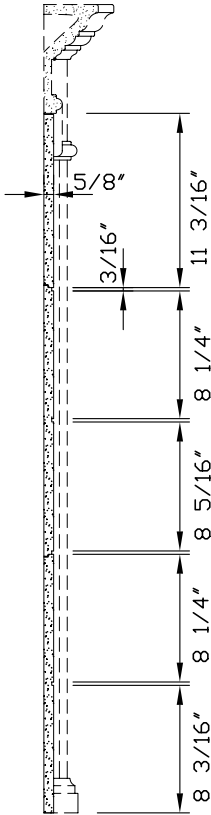
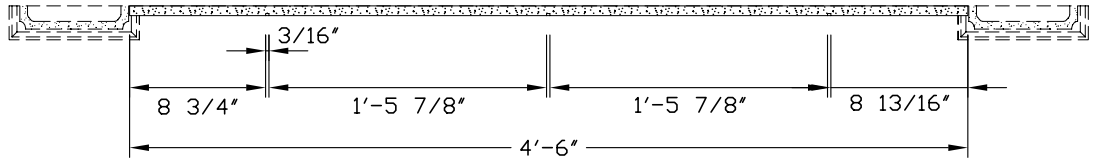


Arched Overmantel Panel insert 4155-TC Noncombustible Overmantel Panel insert Fact Sheet

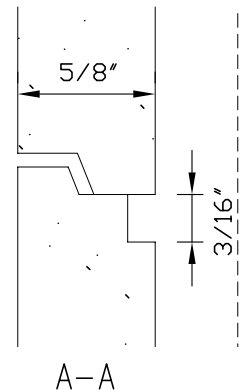


* Overmantel and Fireplace mantel are not included.

FEATURES AND SPECIFICATIONS

Material meets the requirements for non-combustibility in accordance with ASTM E-136

- High definition, crisp details
- Adjustable height
- Fast, easy installation
- Material is sealed from the factory and requires no further finishing
- Supplied in 3 pieces
- Net weights:
 - Complete overmantel panel insert: 80 lbs
- Boxed weight: 115 lbs



All dimensions & weights are approximate

DO NOT SCALE

Copyright (c) 2008 Balmer Architectural Moldings Inc.
Information contained in this drawing shall not be copied or used without the express permission of Balmer Architectural Moldings Inc.

Date: Oct. 9, 2008