

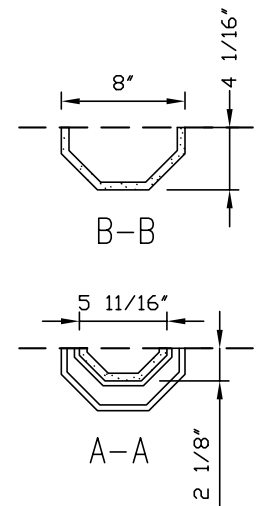
## FEATURES AND SPECIFICATIONS

Material meets the requirements for non-combustibility in accordance with ASTM E-136

- High definition, crisp details
- Adjustable height
- Fast, easy installation
- Material is sealed from the factory and requires no further finishing
- Riser panel dimensions as supplied:  
43" X 9" X 7/8"

- Supplied in 4 pieces
- Net weights:
 

Complete mantel:	110 lbs
Mantel top:	45 lbs
Each mantel leg:	20 lbs
Riser panel:	25 lbs
- Crated weight: 140 lbs



All dimensions & weights are approximate

DO NOT SCALE

Copyright (c) 2006 Architectural Moldings Ltd.  
Information contained in this drawing shall not be copied or used without the express permission of Architectural Moldings Ltd.

Date: July 26, 2006