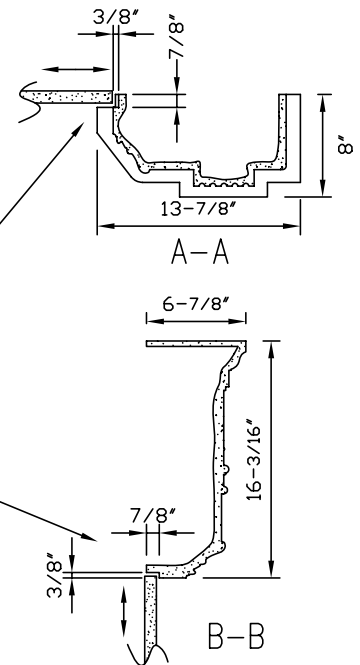
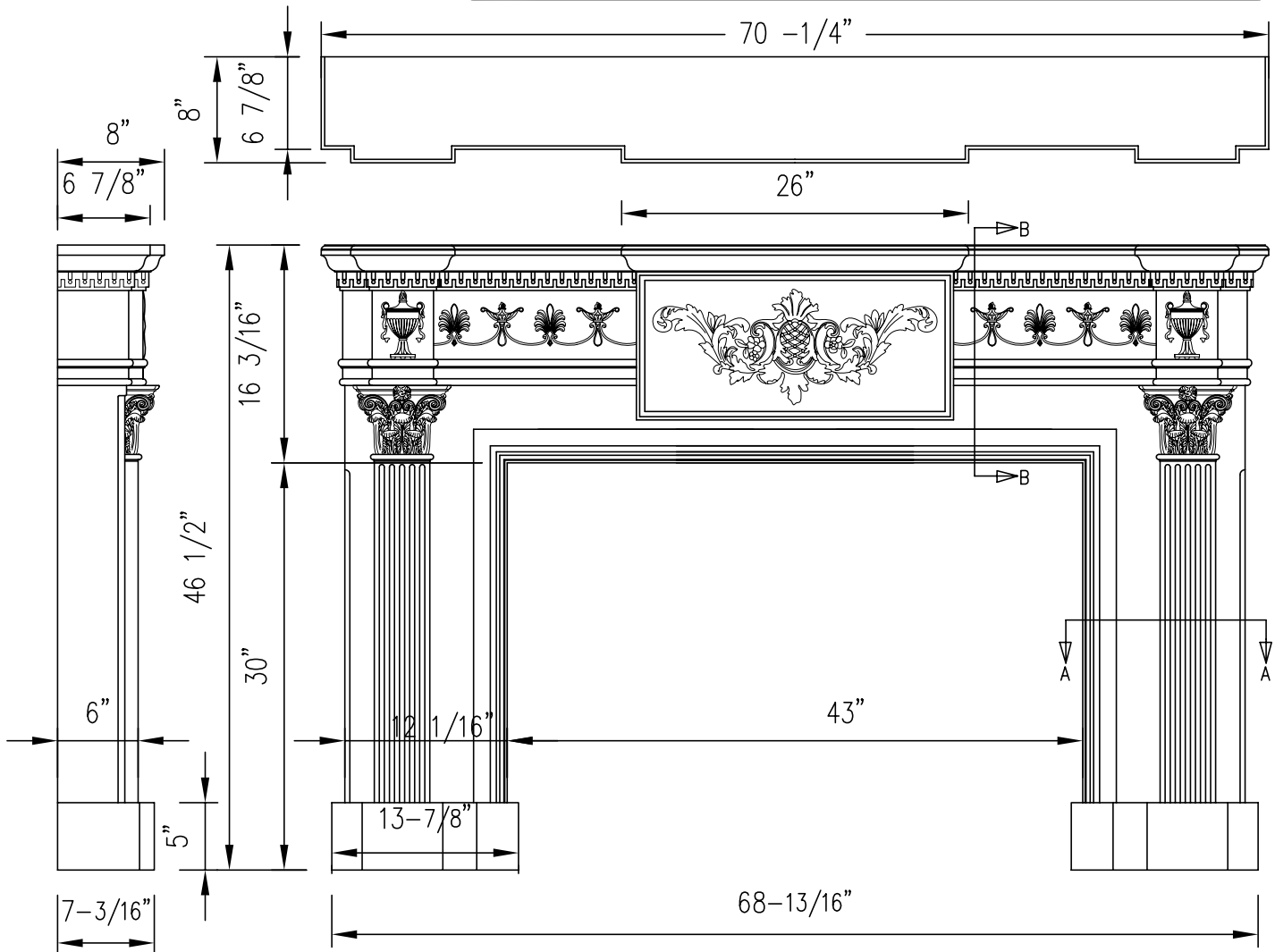


Strasbourg 1911C Noncombustible Fireplace Mantel Fact Sheet



FEATURES AND SPECIFICATIONS

Material meets the requirements for non-combustibility in accordance with ASTM E-136

- High definition, crisp details
- Fast, easy installation
- Glass fibre reinforced white gypsum cement
- Ready to prime and paint
- Supplied in 1 piece
- Net weight per unit: 170 lbs
- Crated qty per unit: 1
- Crated weight: 200 lbs
- 3/8" wide X 7/8" deep rabbet to accommodate a marble, stone or other noncombustible filler panel material insert (not supplied with mantel)

All dimensions & weights are approximate

DO NOT SCALE

Copyright (c) 2004 Architectural Mouldings Ltd.
Information contained in this drawing shall not be copied or used without the express permission of Architectural Mouldings Ltd.

Date: Aug. 30, 2005